



churchonthemove



DRAWING: **Rigging** PLATE: **3/5**

DESIGNER: Daniel J. Connell  
CREATED: 12/10/10 DRAWN BY: dj.c.  
REVISED: 12/10/10 SCALE: n.t.s.  
FILE: Christmas2010 ACTIVE.vwx

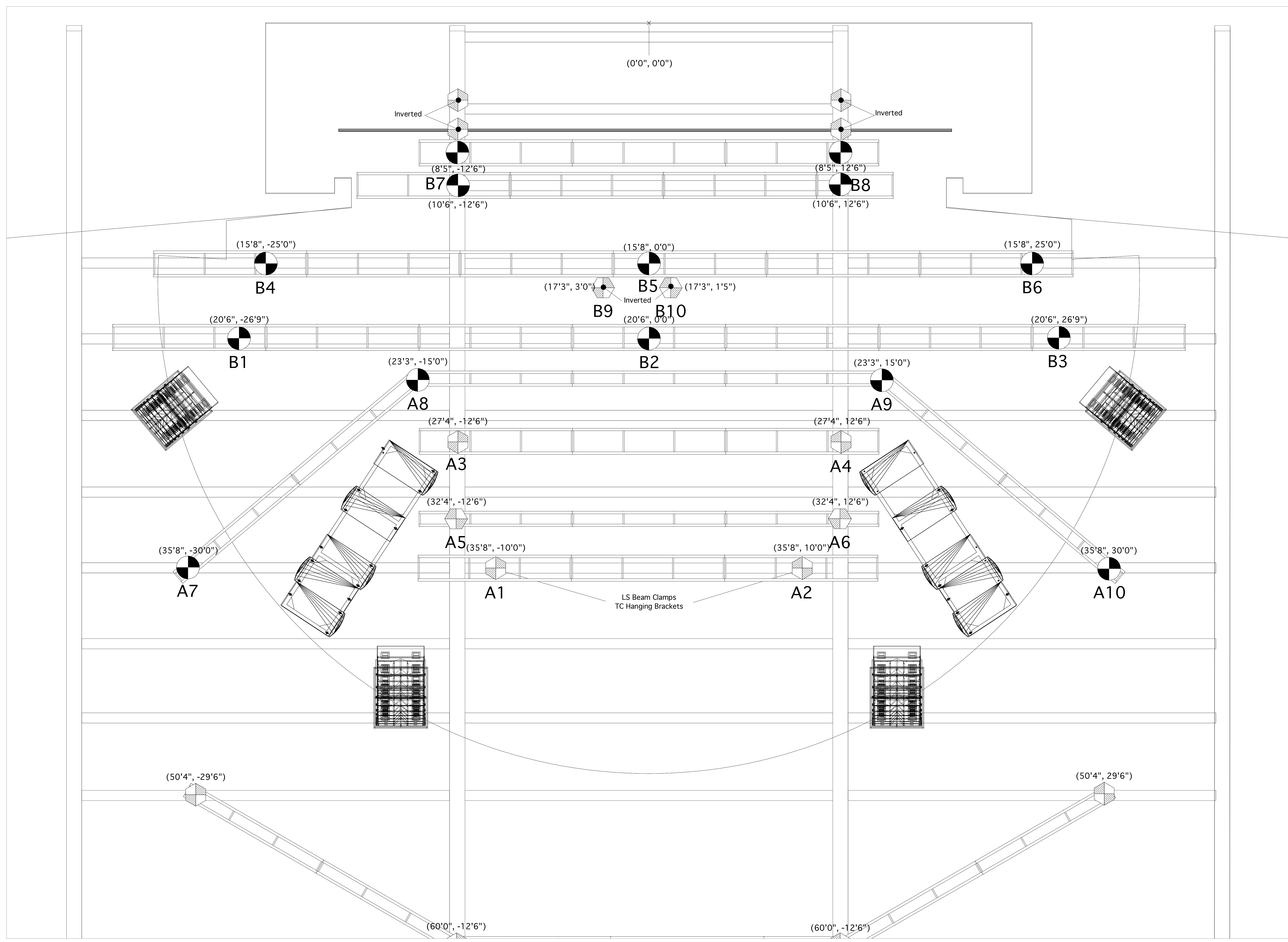
PATHPORT ASSIGNMENTS

PP-1 - Univ. 3	4PORT 1 -
PP-2 - Univ. 2	4PORT 2 -
PP-3 - Univ. 4	4PORT 3 -
PP-4 - Univ. 4	4PORT 4 -
PP-5 - Univ. 3	4PORT 5 -
PP-6 - Univ. 4	4PORT 6 - Univ. 1
PP-7 - Univ. 6	4PORT 7 - Univ. 7
PP-8 -	4PORT 8 - Univ. 1
CATSR - Univ. 5	
CATSL -	

KEY

unit #, dmx address, Mac III Profile, Mac 700 Wash, Mac 700 Profile, Mac TW1, COTM "Flower", Strand SL Leko, coordinates, control, 1 Ton Motor, 1/2 Ton Motor, DD-# Data Distributor, PP-# Pathport Node

G = G.A.M. (GOBO & COLOR)  
L = LEE  
R = ROSCO (GOBO)  
K = KMAX/APOLLO (GOBO)  
X = ROSCOLUX



THIS DRAWING AND ITS INHERENT CONCEPTS ARE THE SOLE PROPERTY OF CHURCH ON THE MOVE. THEREFORE, NEITHER IT, NOR ANY PORTION THEREOF, MAY BE DISCLOSED OR REPRODUCED IN ANY MANNER WITHOUT THE EXPRESSED CONSENT OF SAID OWNER. POSSESSION OF THIS DRAWING DOES NOT CONSTITUTE OWNERSHIP.

THIS ILLUSTRATION REPRESENTS VISUAL CONCEPTS ONLY. IT DOES NOT IMPLY STRUCTURAL SUITABILITY OR FITNESS. ITS CREATOR TAKES NO RESPONSIBILITY FOR ITS SAFE EXECUTION.

THESE CONCEPTS ARE INTENDED FOR THIS PRODUCTION ONLY AND MAY NOT BE USED FOR ANY OTHER.